

SECTION 28, T.6N., R.2E., S.L.B. & M.

IN WEBER COUNTY

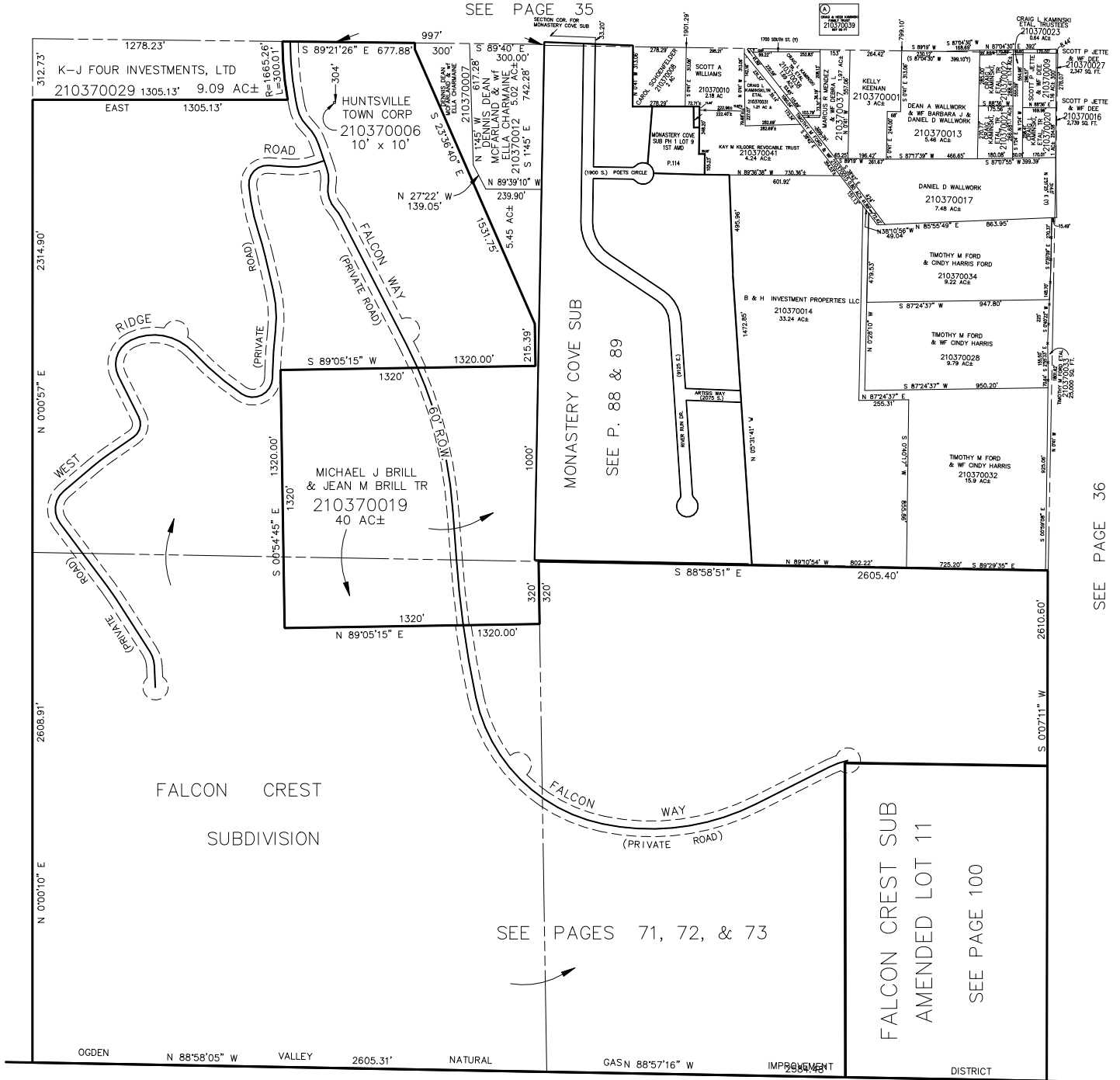
SCALE 1" = 400'

TAXING UNIT: 318

SEE PAGE 35

SEE PAGE 38

SEE PAGE 36



SEE PAGES 71, 72, & 73

FALCON CREST SUB
AMENDED LOT 11
SEE PAGE 100

SEE PAGE 42